



M E T R O L L A

Metrolla enables remote, mobile LiDAR data offload in near real-time.

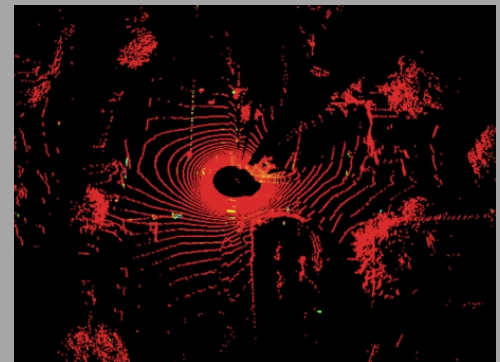
Metrolla is the first company specifically focused on mobile high-volume near real-time LiDAR data offload. The challenge is current sensor technology that generates gigabytes of data per second. In order to stream data remotely in near real-time using current communication (4G) technology, Metrolla has created a way to access the ROS system with specific optimization and compression routines.

Metrolla allows the ability to apply artificial intelligence and machine learning, route optimization, compliance and governance requirements from anywhere in near real-time. In addition to high-volume data streaming, the Metrolla AutoComm provides a highly accurate GPS server, NTP service, and a Data Modem for other V2X sensors. The Metrolla Management Dashboard, offered via multiple cloud-based services, integrates the AutoComm's communication capabilities while providing data management and centralized data oversight and processing.

The Metrolla AutoComm



Metrolla Dashboard LIVE Stream



About Metrolla:

Metrolla was started in response to data access and governance issues CTO and founder Adam Szablya observed across the entire V2X marketplace. Since our initial launch in 2020, Metrolla has expanded capabilities to work with all LiDAR, video, and V2X sensors to better serve a growing market including V2X, defense, mapping, robotics, drone delivery and more.

Ready to partner?

Now accepting R&D and Pre-Sales partners at

metrolla.com

